



IDENTIVE

Driver Installation Guide (Windows)

Multi-ISO HF & Multi-Slot Reader Series

Document history

Revision	Date	Author	Description
1.0	August 2012	Timo Baur	Initial version

Contents

1. Abstract	4
2. Document information.....	4
3. Driver download.....	4
4. Driver installation (Windows XP / 7)	5
Step 1:.....	5
Step 2:.....	5
Step 3:.....	5
Step 4:.....	5
Step 5:.....	6
Step 6:.....	6

1. Abstract

This documents shows all steps to install the PC/SC compliant driver for USB versions of Identive Multi-ISO HF and Multi-Slot reader devices.

2. Document information

The installation process shown below is for Microsoft Windows only and can be used either for Windows XP and Windows Vista/7.

3. Driver download

Download the PC/SC driver for Windows XP / 2000 / Vista / 7 (32 & 64 bit) from our website **www.identive-technologies.com** (Support ➤ Downloads).

NOTE:

- Unplug the reader before starting the installation process
- Windows 7 users please read "README_Windows7.txt" located in the download ZIP file

4. Driver installation (Windows XP / 7)

Step 1:

Unplug the device from the host.

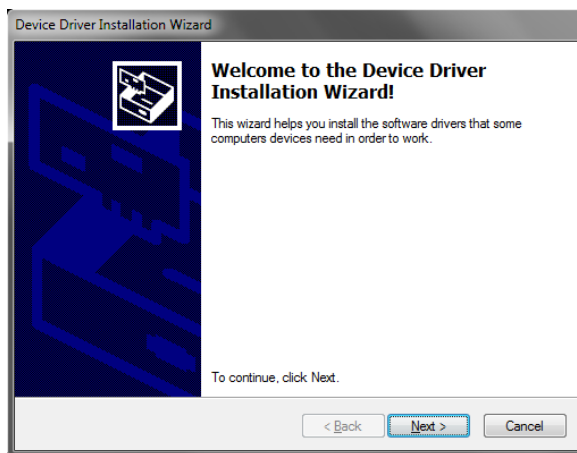
Step 2:

Double click on „Setup.exe“ located in the extracted download folder to start the device driver installation wizard.



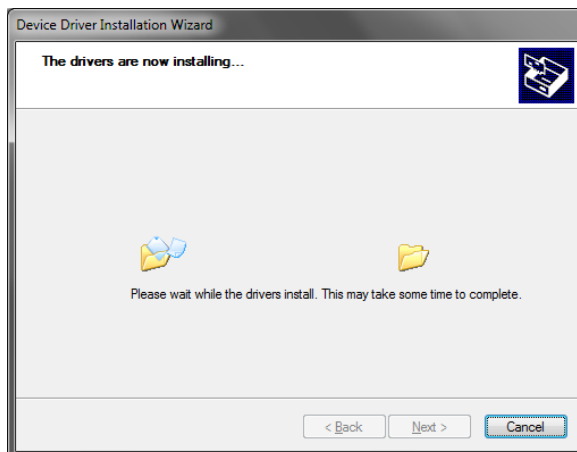
Step 3:

Click „Next“ in the wizard to start the installation process.



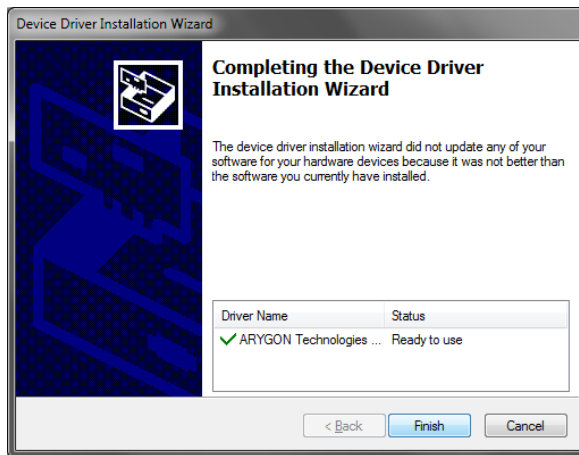
Step 4:

The installation wizard now installs the driver files.



Step 5:

After all driver files have been installed the following confirmation screen is shown. Click on „Finish“ to complete the installation.

**Step 6:**

Connect the device to the host. The reader will now be installed automatically. Wait for the appropriate Windows confirmation stating the same.