



## Simplified Physical Access with ICPAM

### Exit Reader Module for EM-100

- **EXPANSION**  
Increases output control at the door, utilizing the ICPAM EM-100 product family to do more with a single controller.
- **POWER OVER ETHERNET**  
Reduces wiring and power supply costs by powering modules using Power over Ethernet (PoE) supplied to the ICPAM EM-100 Controller.

The Identiv Connected Physical Access Manager (ICPAM) is a management application for physical access that integrates into the Cisco ecosystem. ICPAM is used to configure EM-100 Controllers and TS Readers, monitor activity, enroll users, create identification badges, and allows integration with existing data stores, security and IT applications.

The ICPAM Exit Reader Module for EM-100 enables the adding of a second reader to protect a door. In many cases, the second reader would act as an exit reader on the inside (secure side) of the door. This second reader would then work in tandem with an entry reader (a reader on the outside, or non-secure side, of the door). With this setup, the exit reader makes it possible to better track authorized personnel locations or movements, including auditing entry and exit times and the associated dates, and provides more flexibility when defining and enforcing anti-passback areas.

### Specifications

CONDITIONS	VOLTAGE DC (VDC)	CURRENT (AMP)	OUTPUT POWER (MAX)	OPERATING CONDITIONS	CABLE LENGTH	UL REFERENCE NUMBER
DC Input (NSC)	10.8 to 24VDC	0.03Amp	7.35W (600mA @ 12.25VDC) Note: DC Input = PoE	32° to 122°F (0° to 50°C)  5% to 95% relative, non-condensing	Wiegand=500 ft (152.4 m)  Hi-O CAN Bus Total Length 100 ft (30 m) (with EM-100)  Maximum between drops 30 ft (10 m)  22 AWG • 0.65mm • 0.33mm <sup>2</sup>	MEWMAKNN
DC Input (MAX)	10.8 to 24VDC	0.70Amp				
Data 1/CLK, Data 0/Data (MAX)	0-5VDC Reference					
Reader PWR Output VDC (MAX)	+9.8 to +12.25VDC	0.32 to 0.60Amp				
GRN LED, RED LED, Beep and Hold (MAX)	0-5VDC reference	0.005 (sink)				
External Tamper (MAX)	+5VDC (NOM)	0.017Amp				

Note: NSC=Normal Standby Condition

## Product Details

<b>DIMENSIONS</b>	3.3 x 5 x 1.5 in (84 x 127 x 37 mm)
<b>WEIGHT</b>	4.9 oz (140 g)
<b>CERTIFICATIONS</b>	UL294 (US) Listed Component, CSA 205 (Canada), FCC Class A (US), ICES-003 Class A (Canada), CE Mark EN 301 489-3 EN 55022 EN 50130-4 (EU), and C-Tick AS/NZS CISPR 22 (Australia and New Zealand)
<b>IDENTIV SKU</b>	ICPAM-MOD-EXIT
<b>PRODUCT</b>	ICPAM Exit Reader Module

## Ordering Information

IDENTIV SKU	PRODUCT	DESCRIPTION
ICPAM-MOD-EXIT	Identiv ICPAM Exit Reader Module	Identiv ICPAM Exit reader Module

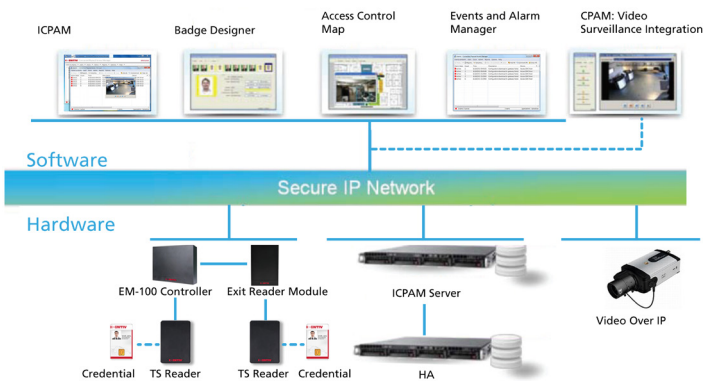


Figure 1: Two readers with module and controller



Figure 2: Exit Reader Module for EM-100 (front and back view)

Identiv (NASDAQ: INVE) is a global security technology company that establishes trust in the connected world, including premises, information, and everyday items. CIOs, CSOs and product departments rely upon Identiv's trust solutions to reduce risk, achieve compliance, and protect brand identity. Identiv's trust solutions are implemented using standards-driven products and technology, such as digital certificates, strong authentication, mobility, and cloud services.

Identiv has offices worldwide. Addresses and phone numbers are listed at [identiv.com/contact](http://identiv.com/contact). For more information, visit [identiv.com](http://identiv.com) or email [sales@identiv.com](mailto:sales@identiv.com).

Technical data is subject to change without notice.