

uTrust Sense Temperature Tracker Cold Chain Management Solution

Introducing the next generation of affordable, mobile-ready Internet of Things (IoT) sensor solutions for environmental data capture and cloud-based analytics and provisioning.

Typical Applications

- Supply chain (i.e., traceability and cold chain monitoring for perishable foods or flowers during transportation and storage)
- Healthcare and pharmaceutical (i.e., medical equipment and drugs)
- Government applications
- Smart packaging

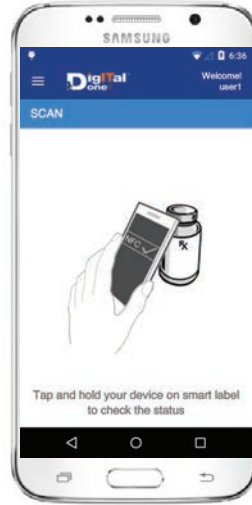
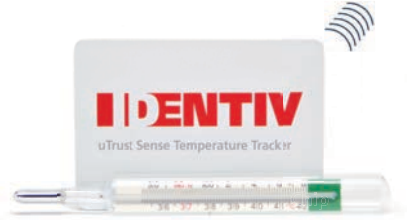
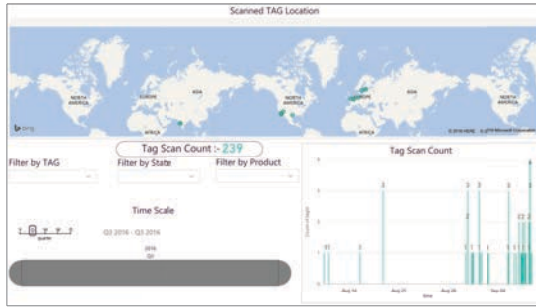
Details

- Trust the temperature history of sensitive products
- Cost-effective
- Can be read by any IoT device (NFC-enabled)
- Bundled with a mobile Android application and cloud platform access for data analytics and eventual risk remediation

Features

- Robust design to prevent damage (approximately 1.7 mm thick)
- Active, battery-assisted, pocket-sized tag
- Self-adhesive backing: Convenient application to any surface
- Custom printed artwork
- Temperature range: -30 to 50°C (-22 to 122°F)
- Battery life: >90 - 120 days after product activation, depending on measurement interval
- RFID chip: Contactless ISO/IEC 14443, readable by NFC-enabled mobile phones
- Thin flex battery
- Log capacity: >10,000 temperature records
- Data logging modes:
 - Continuous logging (default mode, logging all temperatures at specific intervals)
 - Out of limits only and limit-crossing mode (not supported in this version)
- Programmable logging interval (10 seconds to >9 hours)
- Trusted architecture with data encryption and end-to-end authentication with the cloud
- Temperature calibration procedure according to ISO/IEC 17025
- CRF 21 part 11 compliance (in progress)





Smart Pharma Applications

More and more medicines are biologically engineered and require a temperature-controlled supply chain to ensure their efficacy is retained. Temperature tolerances are dependent on the time of occurrence and the actual product being shipped. For example, vaccines can easily become inactivated by an excess exposure to heat. If you are required to implement a cold chain distribution process on top of your GDP environment, or if you require proof of conformance in your custody chain, Identiv provides a proven solution to make it happen.



Identiv's uTrust Sense Temperature Tracker is a solution developed in partnership with Syntel, Enfucell, and NXP. To order, or for more information on this innovative solution or the companies involved, please visit smartlabeldemo.com or call +1 888-809-8880. To activate the tag, please refer to the user guide and download the mobile application by visiting <https://play.google.com/store/apps/details?id=com.syntel.connectone.smartlabel> or scanning the QR code below.

