

DIGI*TRAC

Annunciator Guide



DTA001-0901

DTA001-0901, September, 2001

Copyright© 2001 Hirsch Electronics Corporation. All rights reserved. ScramblePad® is a registered mark of Hirsch Electronics Corporation. DIGI*TRAC™, MATCH™, ScramblePad, ScrambleProx® and SCRAMBLE*NET™ (abbreviated S*NET) are all trademarks of Hirsch Electronics Corporation.

Hirsch Electronics Corporation
1900 East Carnegie Avenue
Building B
Santa Ana, CA 92705-5520

Phone: 949-250-8888 or 888-809-8880
Fax: 949-250-7372
Web: www.hirschelectronics.com



Getting Help

If you encounter a problem that is not discussed in this guide and you need technical support, do the following:

1. Contact your local dealer or the provider of this product.
2. If your dealer is not available, contact Hirsch Technical Support directly. This can be done in a number of ways:

Mail: Hirsch Electronics Corporation
1900 East Carnegie Avenue
Building B
Santa Ana, CA 92705-5520

Attn: Technical Services

Voice: (877) HIRSCHX (technical queue)
(888) 809-8880

Fax: (949) 250-7362

Email: support@hirschelectronics.com

WWW: www.hirschelectronics.com

Whenever you call your local dealer or Hirsch, be sure to have your registration material, serial number and software version number available.

For future reference, record these numbers here.

Serial Number: _____

Version Number: _____

Dealer: _____

Dealer Phone #: _____

CCM Rev/Version #: _____

Introduction

The DIGI*TRAC Annunciator (DTA) is used to monitor basic security functions—such as alarm, input, and relay status. It provides a local display of critical information near or outside the protected area.

On the back of the Annunciator is an integrated MATCH2 board that communicates with the controller using the same digital channel as both the ScramblePad and MATCH.

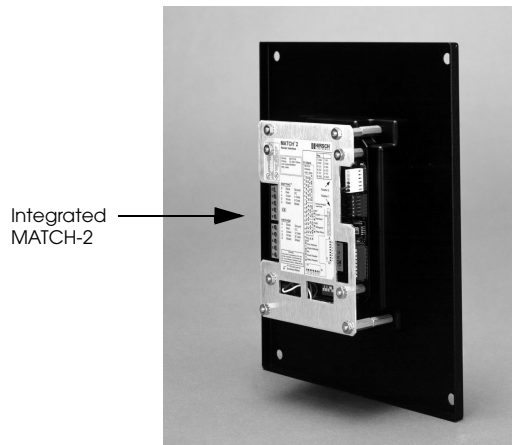


Figure 1: DIGI*TRAC Annunciator – Side View

The front of the Annunciator includes both a four-line, 20-character non-backlit LCD display and four status request buttons.

The status request buttons are smart keys that change their meaning according to the current dialog displayed on the LCD screen above the keys.

Both a picture and an illustration of this front panel is shown in Figure 2:

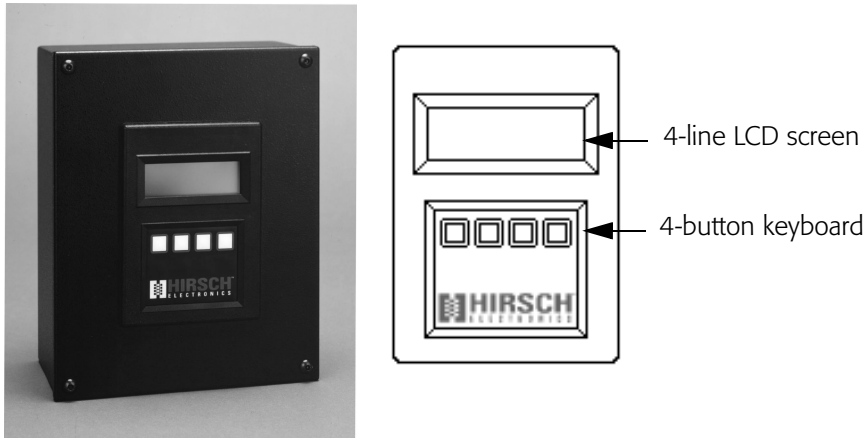


Figure 2: DIGI*TRAC Annunciator – Front View

These keys are used for status requests only and cannot issue commands of any sort.

Status requests supported are:

- Alarm Log Display from the Controller's Alarm Buffer (holds last 256 alarms)
- Current Relay Status (to determine whether a door is locked)
- Current Input Status (to determine where a door is closed or a device is secured)

This unit requires CCM 7.0 but does not require any host software for setup or operation. It is ideal for lobbies and other passages outside of the secured area where an individual can confirm that the protected area is secure (such as locked and ready to leave).

Installing the Annunciator

The DIGI*TRAC Annunciator comes pre-assembled with the MATCH2 installed on the back of the DTA. There are several optional cover plates available as well as surface mount and flush mount back boxes.

The DTA is a secure annunciator and requires a ScramblePad code or card to activate the display.

A simplified example of an Annunciator installation looks like Figure 3:

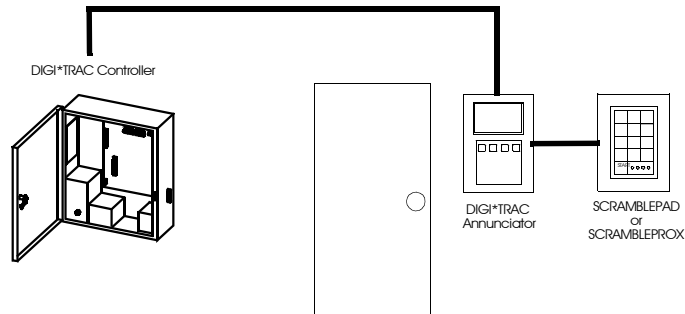


Figure 3: Typical Annunciator Installation

A more complex example is shown in Figure 4:

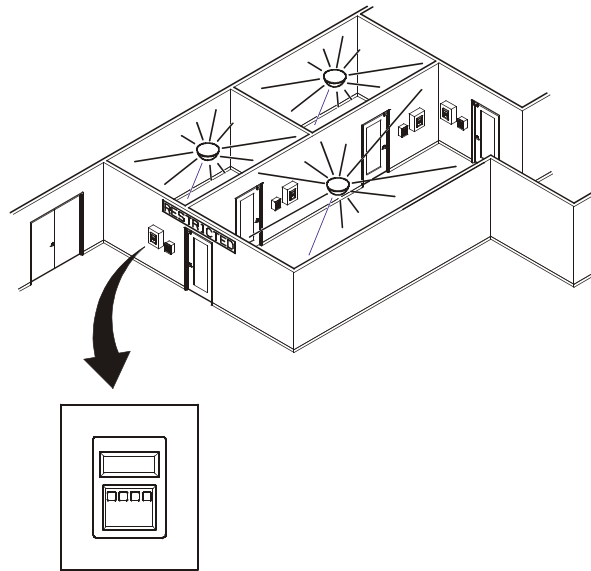


Figure 4: Annunciator Example

This example represents the way in which an annunciator can be used to monitor activity within a given area—in this case, three rooms incorporating readers, keypads, relays, motion detectors, amongst other devices—and supply alarm and event information specific to the entry and exit of personnel to/from that area.

The required components include:

- DIGI*TRAC Controller
- Annunciator
- Keypad or Card Reader

Most of the installation and configuration requirements for the Annunciator are identical to those you would observe for the MATCH2 board (refer to "MATCH Interface Installation" on page 7-74 in the *DIGI*TRAC Design and Installation Guide* for more details).

To install the Annunciator:

1. Locate the place where you want to put the DTA. This should be located near the ScramblePad/ScrambleProx and/or reader that will authorize the DTA's use.
2. Use the selected surface mount plate or flush mount back box to position and draw an outline on the wall.
3. Either secure the surface mount box to the wall or cut a hole for the flush mount box, then route the appropriate wires into the box.
4. Turn off the power to the area or wall where you want to install the Annunciator.
5. Depending on the type of device you are using, connect the device in one of these ways.

Connecting a ScramblePad

If you are using a ScramblePad to activate the Annunciator:

- a. Route the wire from the Controller to the D*TRAC port on the DTA's MATCH board as shown in Figure 5. Connect the wire to the port.

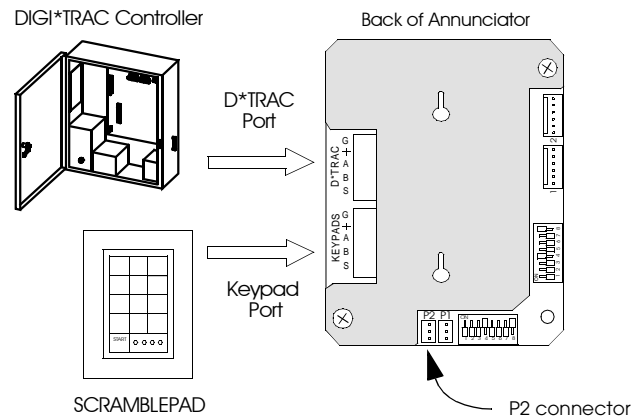


Figure 5: Connect Controller and Keypad to the Annunciator

The DTA communicates with the MATCH2 via its RS-232 port (P2) and draws its power from one of the MATCH2's reader channels (C2). This comes pre-wired from the factory.

- b. Connect an extension cable from the Keypad port on the DTA's MATCH2 board.

Connecting a Reader *If you are connecting a reader to the Annunciator:*

- a. Relocate the connector on Port 1 (P1) of the MATCH2 to Port 2 (P2). This is only used as a power source for the DTA.
- b. Connect the Reader to Port 1 on the DTA's MATCH2 board as shown in the example in Figure 6.

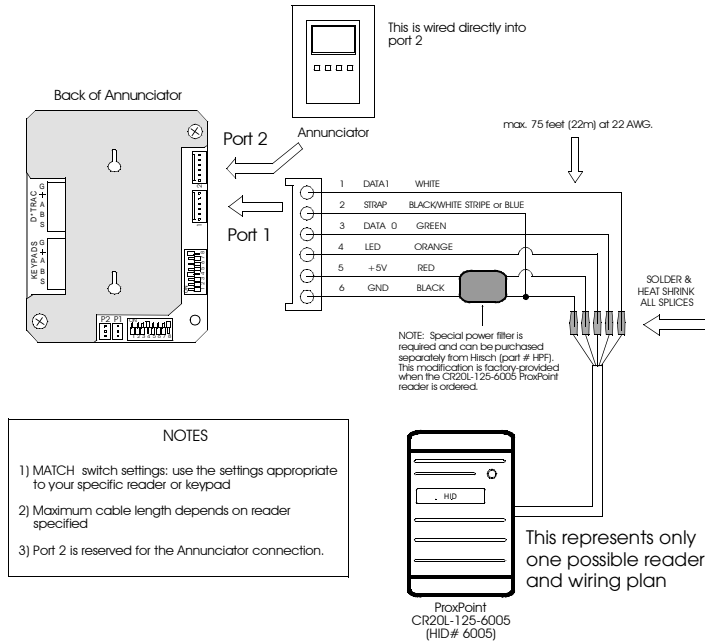


Figure 6: Connecting Reader to the DTA



This picture shows a specific type of proximity reader (CR20L) which is also used in the DS47L-SPX. Your reader and wiring specifications may differ from this picture.

Using a
ScrambleProx

If you are using a ScrambleProx as the keypad, follow these instructions (as shown in the example in Figure 7):

- a. Connect an extension cable from the Keypad port on the back of the ScrambleProx to the Keypad port on the DTA's MATCH2 board.
- b. Relocate the connector on Port 1 of the MATCH2 to Port 2. This is only used as a power source for the DTA.
- c. Connect the DIGI*TRAC controller cable to the D*TRAC port on the DTA MATCH2 board.
- d. Disconnect the proximity reader connector from Port 1 on the ScrambleProx.
- e. If necessary, use an extension cable (Hirsch# MCRH) to connect the loose reader cable from Port 1 on the ScrambleProx to Port 1 on the MATCH2.

Follow the connection chart shown in Figure 7.

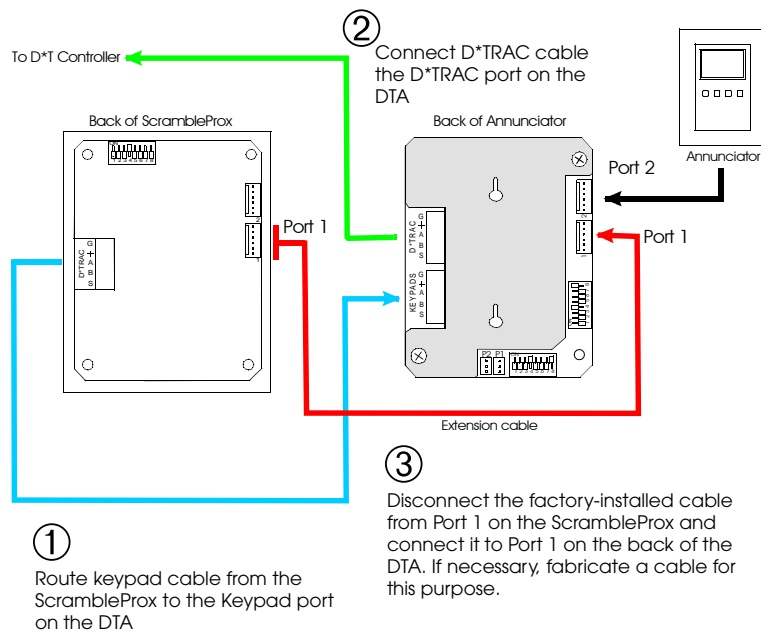


Figure 7: Connecting a ScrambleProx to a DTA

6. *If you are using a keypad, route the data wire from the ScramblePad or ScrambleProx keypad to the Keypad port on the DTA's MATCH2 board as shown in Figure 5.*



The ScramblePad or reader used to activate the DTA can also be used as a standard entry access device. The ScrambleProx can be used as long as its integral reader is connected to the DTA's Port 1 of the MATCH2 instead of Port 1 on the ScrambleProx as shipped from the factory.

7. Follow the same power cable requirements as you would use to connect an independent MATCH2. Ordinarily the controller provides sufficient power to operate attached ScramblePads and MATCH2 interfaces; however, there are conditions which require more power than the controller can supply.
8. Secure the DTA to the box or plate.

Once connected, the operator accesses the Annunciator by either entering a special code into the connected ScramblePad or using a special card on the attached reader or ScrambleProx. A simple menu appears on the Annunciator LED. The operator then follows the menu to access the information they require.

Assigning Annunciator Privileges

The process of enabling the DTA for the controller depends on the host PC software used. There are three methods for assigning Annunciator privileges to a user:

- Keypad assignment
- SAM assignment
- Velocity assignment

Each of these methods is discussed in this section.

Keypad Assignment

To assign Annunciator privileges from a ScramblePad:

1. From an attached ScramblePad, enter program mode.
2. Use the following command and syntax to assign Annunciator privileges to a user:

```
44*1*User Number*Code
```

where *User Number* is the number assigned to this user and the *Code* is the PIN number assigned to this user at this door to activate the DTA.

You can also use this command to assign Annunciator privileges through the SAM diagnostics window or the MOMENTUM Hirsch Test Tool.

SAM Assignment

To assign Annunciator privileges using SAM:

1. Access the Add/Edit User Group worksheet by selecting **Add Group** in the Groups menu, or press **F3 Add**.
2. Select the User Group you want to enable for this function. The Add/Edit User Group dialog box appears.
3. Either define a new group or select an existing user group.
4. Click the "Function" field arrow. An option list appears.
5. Select the **Alarm Control** button. A list of available alarm functions appears.
6. Select the **Alarm Cancel** function.

7. Select the access zone and the code extension you require to activate this DTA.

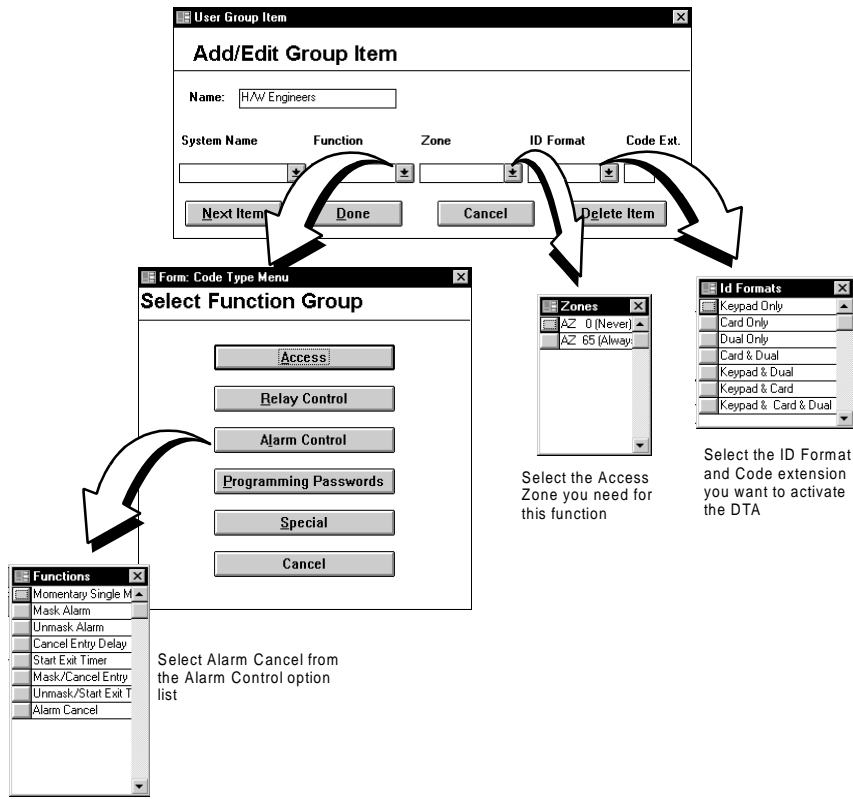


Figure 8: Programming the Controller Using SAM

Velocity Assignment

If you are using Velocity, you can assign an operator the ability to use the Annunciator in one of two ways:

- Define a Function Group
- Define a user credential through Enrollment Manager

Creating a Function Group is the best way if you plan to assign Annunciator privileges to more than one user.

Function Group Assignment

To assign Annunciator privileges for a group through Function Groups:

1. From the Velocity system tree, select the Function Groups file. A list of all currently-defined function groups and the Add New Function Group button appear in the right hand Components pane.
2. Either double click the **Add New Function Group** button to create a new function group, or double click an existing function group. The Function Group Properties dialog box appears.
3. If this is a new function group, enter a new function group name in the Name field. If this is an existing function group, a name already appears.
4. Click the **Add...** button to add the required code extension to this function group. The Define Extension dialog box appears.
5. In the "Extension Digits" field, enter one or two digits.
6. In the "Function Category" field, select **Alarm** from the pull-down option list.
7. From the "Function" field, select **Alarm Cancel** from the pull-down option list.
8. From the "Controller" combo box, select the currently-defined controller to which this extension code applies.
9. From the "Control Zone" combo box, select the currently-defined control zone or master control zone during which this extension digit applies.
10. Click **Add** to register the new extension digit in the lower window.
11. Click **OK** to return to the Function Group Properties dialog box.
12. Click **OK** to return to the main menu.

- Using Function Groups in the Administrative Mode, assign this function group to the specified user(s) on the Function property page.

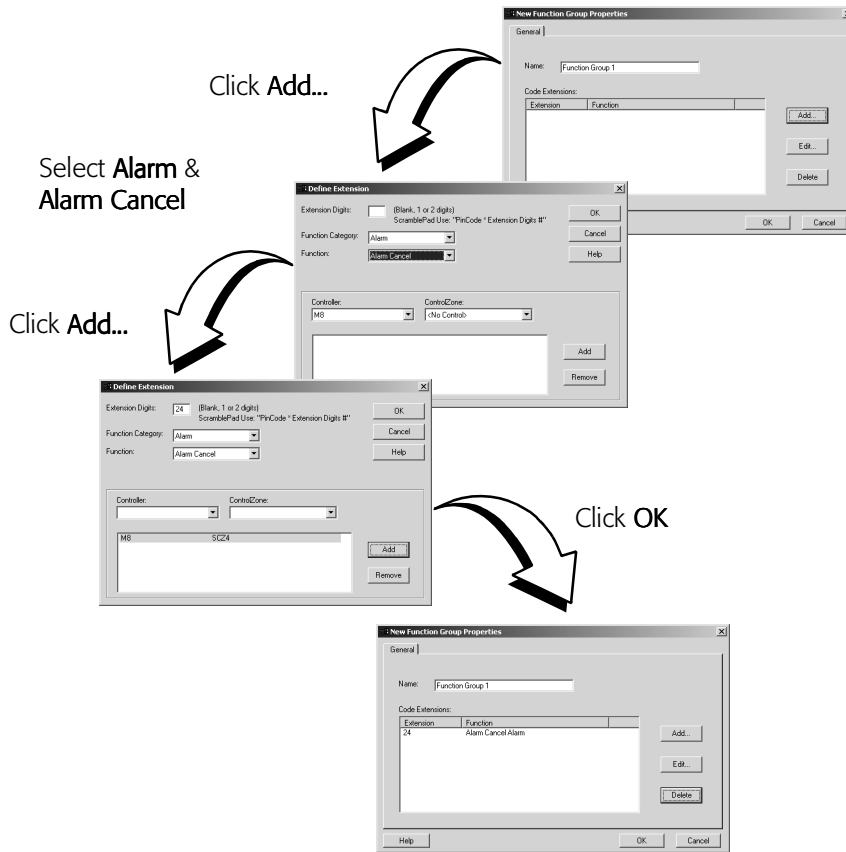


Figure 9: Assigning Annunciator Privileges using Velocity's Function Group

Single Credential Assignment

To assign Annunciator privileges for a single credential through Enrollment Manager:

1. Open the Enrollment Manager.
2. Select the person to whom Annunciator privileges should be assigned.
3. Create a new credential by double clicking the **Add New Credential** button. The Credential Properties dialog box for the selected person appears.
4. Fill out this form as required making sure to supply a code or card.
5. Click the Function tab.
6. If not already selected, click the **Single Function** radio button.
7. In the "Function Category" field, select **Alarm** from the pull-down option list.
8. From the "Function" field, select **Alarm Cancel** from the pull-down option list.
9. From the "Controller" combo box, select the currently-defined controller to which this extension code applies.
10. From the "Control Zone" combo box, select the currently-defined control zone or master control zone during which this extension digit applies.
11. Click **Add** to register the new extension digit in the lower window.
12. Click **OK** to return to the Enrollment Manager main menu. The new credential appears in the Credential pane for the selected user.
13. Click **OK** to return to the main menu.

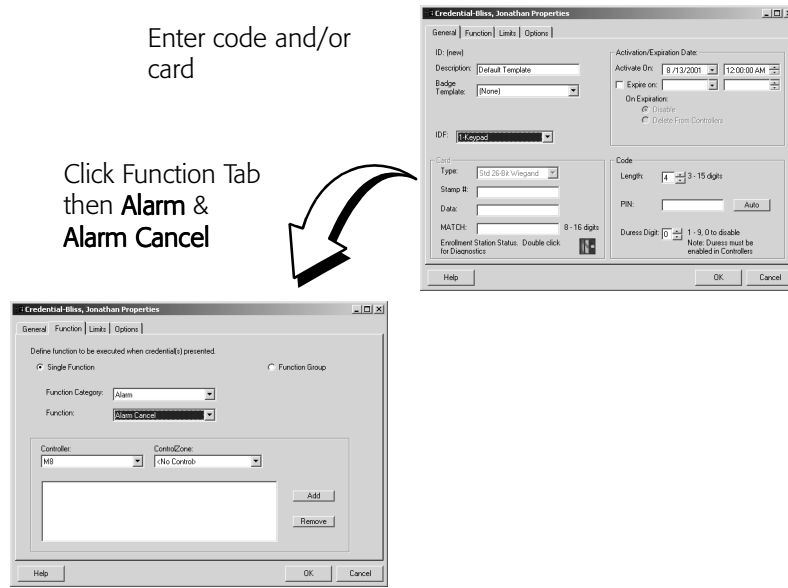


Figure 10: Assigning Annunciator Privileges to a Credential using Enrollment Manager

Operating the Annunciator

The following procedure shows you how to use the Annunciator.

1. Go to the keypad (either ScramblePad or ScrambleProx) or card reader connected to the DTA. This normally will be the keypad or reader mounted closest to the DTA.

Whenever the DTA is not activated, it displays the time and day like this example:



Figure 11: Inactivated DTA Screen

2. Perform one of these procedures:
 - At the keypad, enter your special DTA-activation code. This is often a code extension (SAM) or function group (Velocity).
 - At a reader, swipe your special DTA-activation card.



Your regular access code/card alone cannot activate the DTA. The code/card must be used with an extension digit or function group digits. The system administrator must issue you this special code/card or extension to activate the DTA.

The DTA is activated. The DTA's screen displays the initial screen like Figure 12.

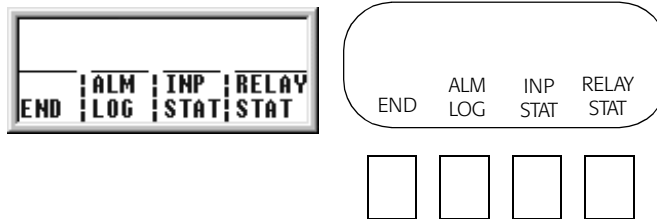


Figure 12: Annunciator Main Menu

These options are:

Press this button to:

- | | |
|------------|--|
| END | End the current session and return the DTA to inactive mode. |
| ALM LOG | Display the log of all alarms experienced by this controller only. |
| INP STAT | Display the current status for all inputs connected to this controller only. |
| RELAY STAT | Display the current status for all relays (outputs) connected to this controller only. |

3. Press the button for the option you want.
A list of the current alarms or status points (input or relay) for the connected controller appear.

☞ *You will only see the alarms or status for the controller connected to this DTA. No other controller's status is displayed.*

- If you press the ALM LOG button, a screen like Figure 13 appears:

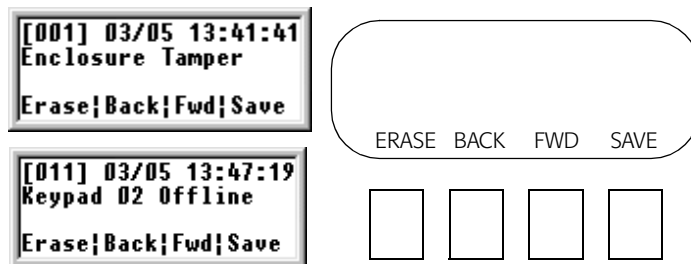


Figure 13: Alarm Log Menu

Only one alarm at a time can be displayed.

- If you press INP STAT, a screen like Figure 14 appears:

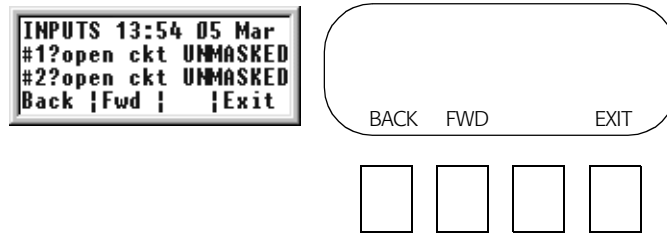


Figure 14: Input Status Menu

This screen displays the current Alarm Input or Expansion Alarm Input status. The report is time stamped at the time the button is pushed. A list of abbreviations you will find on this screen are shown in the following table:

?	A line fault of some sort, followed by a brief explanation; in the preceding case, it indicates an open circuit ('open ckt').
*	Designates an input or expansion input is currently in alarm (even if masked).
AL	Alarm contact is unmasked.
..	Alarm Contact is secure.
RQ	RQE contact is active.
TP	Tamper contact is active.
M	Masked by one of the following devices:
Tz	Masked by Time Zone.
C	Masked by Control Zone.
Ul	Masked by Unlock.
X	Masked by Entry/Exit Delay timer.

An example of several possible input status values are shown in Figure 15:



Figure 15: Input Status Example

- If you press RELAY STAT, a screen like Figure 16 appears:

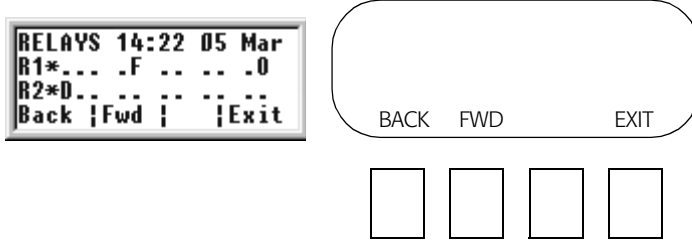


Figure 16: Relay Status Menu

A list of abbreviations used in this display are explained in the following table:

R	The relay designation followed by the number of this relay, such as R1 or R2.
*	Relay is energized.
<i>The following abbreviations specify the current condition of the relay:</i>	
D (on left)	Door access in progress.
U	Unlock/Relock.
C	Control timer.
N	Control Force On.

F in 2nd group	Control Force Off.
A	Actuate by Time Zone.
D (in middle)	Disable by Time Zone.
Z	Control Zone "Drive On" by Alarm Input or Expansion Alarm Input.
F in 4th group	Control Zone "Drive Off" by Alarm Input or Expansion Alarm Input.
L	Lock Down.
O	Lock Open.
. (period)	Particular function is not currently active.

An example of this screen appears in Figure 17:



Figure 17: Relay Status Example

In almost every case, the list of alarms, inputs, and/or outputs is longer than four lines.

4. Press one of these keys:
 - Use the FWD key to move forward in the list.
 - Press the BACK key to move backward in the list.
 - Press the EXIT key to return to the main menu shown in Figure 12.

- If this is Alarm Log, use the ERASE key to delete the alarm log. All alarms are cleared from the buffer and a screen like this appears.



- If this is the Alarm Log, press SAVE to save the current alarm entries for later review.
5. When you're finished looking through a particular list, press the EXIT key to return to the main menu. Press the END key to deactivate the DTA.

Appendix: Wiring Specifications

For information on basic electrical wiring specifications, such as wire types and lengths used for connecting the DTA, refer to "ScramblePad/MATCH Inputs" on page 2-15 of the *DIGI*TRAC Design and Installation Guide* (Hirsch# MAN001).

For information on powering a ScramblePad or MATCH locally, see "Powering ScramblePads/MATCH Interfaces Locally" on page 2-31 in the *DIGI*TRAC Design and Installation Guide*.

For additional information, refer to "Powering the ScramblePad Locally" on page 7-71 in the *DIGI*TRAC Design and Installation Guide* for the best technique to use.

