

Hirsch Velocity Software Security Management System



Identiv's Hirsch Velocity is an integrated software platform that manages access control and security operations in hundreds of different facilities, from single high secure rooms to multi-building, multi-location campuses. Control doors, gates, turnstiles, elevators, and other building equipment, monitor users as they move around a facility, prevent unwanted access, maintain compliance, and provide a robust audit trail.

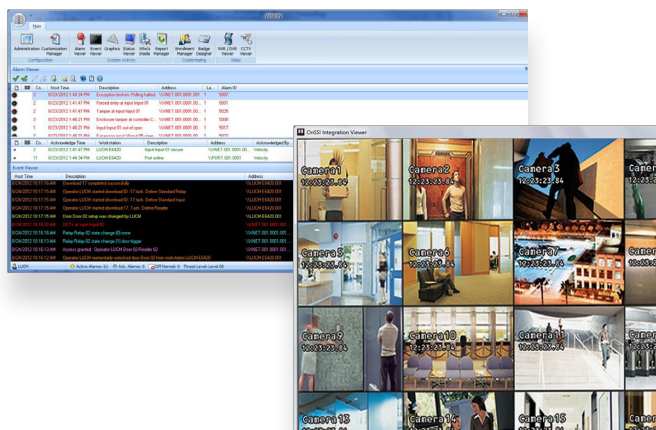
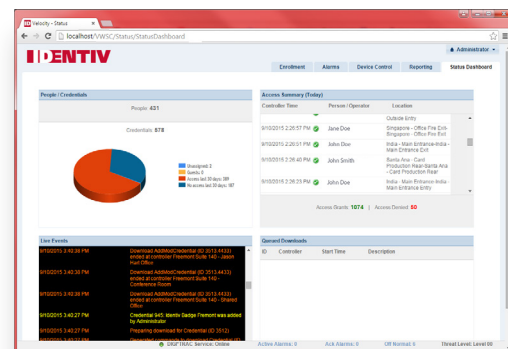
Identiv's Hirsch Velocity is an intelligent, integrated software platform that manages access control and security operations in hundreds of different facilities, from single, highly secure rooms to multi-building, multi-location campuses. With Velocity, control doors, gates, turnstiles, elevators, and other building equipment, monitor users as they move around a facility, prevent unwanted access, maintain compliance, and provide a robust audit trail.

Latest Software Upgrade

Hirsch Velocity 3.8 is the latest iteration of Identiv's world-class physical access software platform. Designed and built from the ground up, Velocity delivers unsurpassed security, interoperability, and greater expansion and flexibility options designed to accommodate the evolution of security technology and meet the needs of even the most complex business, personnel, and facility requirements. Velocity 3.8 provides full compatibility with the latest hardware in Hirsch's Mx Controller product line and supports the latest versions of Microsoft Windows and SQL Server and supports the latest network encryption protocol (TLS).

Velocity Web Services Console

Allows administrators and operators to access real-time system information, enrollment, and control functionality through a compatible browser on almost any device. This provides mobility options for security and facility personnel allowing administrators and security personnel to access key features of Velocity via fixed computers and mobile devices. Velocity 3.8 builds on the Hirsch product legacy while maintaining the management environment that has received many accolades for its robust architecture, full feature set, and ease of use. The modular user interface is retained, so that users with Velocity experience will easily transition to the latest build.



Built Hirsch Tough

Building on the Hirsch product legacy, Velocity 3.8 maintains its award-winning robust architecture, full feature set, and ease of use. The modular user interface ensures that users with Velocity experience will easily transition to the latest build. For new users, the intuitive interface is supported by a comprehensive set of tutorials and help files. Performance enhancements throughout the product enable faster access to administrative views, including animated floor plans and alarm monitoring.

UI Core Features

Feature	Description
Administration	Contains Velocity, controllers, and interfaces configuration tools
Alarm Viewer	Monitor and acknowledge active system alarms, such as Forced Entry, DOTL (door open too long), and many more
Graphics	Provide a visual interface for door status, alarms, and links to video feeds
Event Viewer	View system events as they occur with as much granularity as desired
Enrollment Manager	A comprehensive enrollment tool for managing individuals, groups, and their credentials
Badging Design	Design and control the issuance of credentials from within the Velocity environment
Report Manager	Choose from 75 default reports or create your own; export in wide variety of formats
Velocity Web Services Client	Access information and control systems via a web link; optimized for IE11 and Chrome
Who's Inside	Monitor the personnel in a given building or floor; ideal for managing emergency egress/mustering
Status Viewer	Review the status of all hardware connected to a system, including doors, inputs, relays, controllers, and more
Scheduling Agent	Schedule a wide range of system tasks, like deactivating credentials, running logs, printing reports, or executing command sets
Trigger Action Manager	Pair an action to an event (i.e., associate an alarm with a video camera)
Video Integrations	Associate doors with cameras, view video with the built-in video viewer, launch from active alarm, graphics module, or the viewer
IDS Integrations	Allows control of supported intrusion system's arming status by area or for the entire installation. The system also allows for points be bypassed, while also giving users the ability to trigger outputs tied into the intrusion system

Velocity Licenses - Required for Velocity 3.7 or Later

Feature	Description
VEL-EXPRESS	Velocity security management application software, Express edition. Users, readers, and web client connections are unrestricted. Includes all Velocity standard features such as graphics/badging module and Velocity Web Console. DVD installs 30-day demonstration version. License key enables use on single workstation. For single and networked DIGI*TRAC controllers, including Mx Controllers. Includes Enrollment, Photo Badging, Graphics, Alarms, Events, Control, History, Who's Inside, Programming, and Editing. E-mail Writer and Serial Writer are standard. Runs on Windows 10 (single user). Requires SQL Server 2014 Express (included) or SQL Server 2017 (not included). Help and Guide documentation included on DVD. Includes up to 32 modules, and single workstation.
VEL-SERVER	Velocity security management application software, Server edition. Users, readers, and web client connections are unrestricted. Includes all Velocity standard features such as graphics/badging module and Velocity Web Console. DVD installs 30-day demonstration version. License key enables use server and licensed clients. For single and networked DIGI*TRAC controllers, including Mx Controllers. Includes Enrollment, Photo Badging, Graphics, Alarms, Events, Control, History, Who's Inside, Programming, and Editing. E-mail Writer and Serial Writer are standard. Runs on Windows 10 (client), or Windows Server 2016 (Server). Requires SQL Server 2014 Express (included) or SQL Server 2017 (not included). Help and Guide documentation included on DVD. Includes up to 64 modules and up to 10 thick client connections.
MOD-ADD-16	Velocity security management application software, Server edition. Additional 16 Modules. Requires VEL-SERV-ER.
MOD-ADD-128	Velocity security management application software, Server edition. Additional 128 Modules. Requires VEL-SERVER.
MOD-ADD-512	Velocity security management application software, Server edition. Additional 512 Modules. Requires VEL-SERVER.
MOD-ADD-1024	Velocity security management application software, Server edition. Additional 1024 Modules. Requires VEL-SERVER.
CLIENT-ADD-5	Velocity security management application software, Server edition. Additional 5 Thick Clients. Requires VEL-SERVER.
Mx-1-W	Velocity security management application software, Server edition. Add 8 Wireless Locks, counts against module license, must use Mx-1 controller. Requires VEL-SERVER.

Velocity Certificate Checking

Feature	Description
PACS Registration - PIV	At a prescribed TCP/IP or USB reader, a PIV cardholder will present card and PIN. A window will be displayed to a Velocity Operator so the names and photos can be verified and all the information will be passed to Velocity based on UDF mapping. Door access can be provisioned based on identity data attributes or manually with Velocity.
Periodic Certificate Validation	PIVAUTHCERT and CARD Authentication Key data that is stored in the Velocity database table named UserCertificates will be validated against the CA on a user defined schedule, multiple times per 24 hour period. Velocity Credentials are disabled if the certificate is not valid, or is revoked, suspended, etc.
Reporting/Auditing	Display events in Velocity Event Viewer for retrieval by the default reports. Auditable events include person registration, certificate revocation/credential disabled, scheduled database validation start/stop, real-time certificate validation results.

Optional Add-Ons

Add-On	Description
Velocity Cert Service	FIPS 201 PIV and PIV-I certificate checking/management for CAK/PAK
Point Level Email	Trigger emails based on a specific system event/location
Universal I/O	Allows control of inputs/outputs across any scale of system
Active Directory/HR Provisioning	Role-Based Access Control (RBAC) tied to identity attributes (from HR system or AD)

Integrations and Optional Modules

Velocity's powerful SDK and Video Plug-in allows integrations to external video systems, including American Dynamics, Aventura, Genetec, Milestone, and ONSSI. Velocity's IDS Framework integrates with Bosch B and G Series intrusion systems. Contact the factory for the latest information on integration options, or to get further details on Identiv's .NET SDK.

Velocity seamlessly bridges physical access and IT infrastructures in a powerful and easy-to-use security management solution that scales from single-user applications to enterprise-class environments, connecting hundreds of doors and desktops for thousands of users. Utilized by IT, security, facility management, and guard personnel in commercial, governmental, and educational institutions worldwide. Velocity integrates access control, intrusion detection, video surveillance and recording, photo ID badging, smart cards, biometrics, and interoperability with other building and business systems.

Identiv, Inc. is a global provider of physical security and secure identification. Identiv's products, software, systems, and services address the markets for physical and logical access control, video analytics, and a wide range of RFID-enabled applications. Customers in the government, enterprise, consumer, education, healthcare, banking, retail, and transportation sectors rely on Identiv's access and identification solutions. Identiv's mission is to secure the connected physical world: from perimeter to desktop access, and from the world of physical things to the Internet of Everything.

Identiv has offices worldwide. Addresses and phone numbers are listed at identiv.com/contact. For more information, visit identiv.com or email sales@identiv.com.

Technical data is subject to change without notice.

Copyright © 2020 Identiv, Inc. | All rights reserved. This document is Identiv public information.

Revision/Date of Release: 2020-05-07